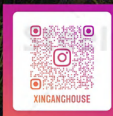


APPLE CABIN ALL MODEL CATALOG



Guangzhou Guose Intelligent Technology Co.,Ltd.

Address: 3110 Herun Plaza, No. 2, Dannan Road, Yuexiu District, Guangzhou City, Guangdong Province



Instagram

Website: <https://www.steelmarkhouse.com>



COMPANY PROFILE



COMPANY PROFILE

Guangzhou Guose Intelligent Technology Co., Ltd. is a professional steel structure company, located in Guangzhou, Guangdong Province. We have trading branches in Australia and Foshan, China.

For ten years, we have provided OEM services to many international brands in the residential construction sector. Today, Guosage has the most complete series of light steel housing products and container products, including light steel villas, light steel B&Bs, light steel commercial buildings, light steel gas stations, space capsules, apple pods, houseboats, container homes, container offices, container restaurants and so on. Our factory covers an area of 30,000 square meters. Products are exported all over the world.

All of Guoshi's products have obtained ISO certification. Every product is quality verified before delivery and detailed inspection is carried out before delivery. Make sure the structure and appearance are intact. We will ensure that the products are not damaged in the process of transportation. We have established many publicity cases in Australia, the United States, the Philippines, Israel, Nigeria and Japan. The annual output value reaches 50 million yuan. Our technology is mature and the price is competitive.



BRAND INTRODUCTION



Lasting quality

Professional products. Quality is guaranteed. Serve with care

Independent research and development team

Guangzhou Guose Intelligent Technology Co., Ltd. is committed to scientific and technological innovation, has a top design team and manufacturing plant, the use of industry advanced energy saving, building structure technology, invested in the research and development of "Apple cabin" products, to create a variety of conditions to meet the living conditions of comfortable hotel products, for people to bring more travel and lifestyle possibilities.

High efficiency, high quality and cost-effective

No foundation, applicable to all terrain, no damage to the ecological environment, no building waste, ecological environmental protection. In the factory, 40 days of production, assembly and disassembly, integrated transportation, 2 hours of on-site installation, no need for secondary decoration, shorten the construction cycle, equipped with fully intelligent home appliance control system, panoramic vision, own flow.

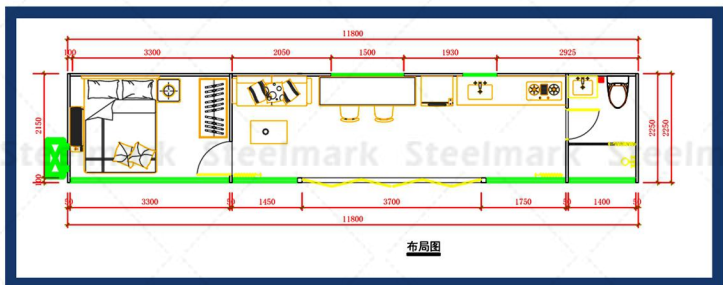
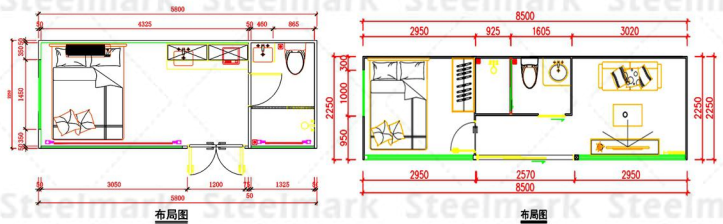
Product quality and service are guaranteed

The main structure of the product is special steel structure. The design stability of the structure is strong, and the wind resistance is strengthened. The main material is made of high strength composite material and galvanized sheet, which has high safety and strong protection. By professional soft decoration designers to create space design scheme for customers, professional planning team according to the actual situation of the project and customer requirements, planning and design, including consulting, overall planning, space design, supporting facilities. Construction drawing, etc.





Size: 5800*2250*2450mm, construction area: 13 square meters, number of people: 1-2
 Size: 8500*2250*2450mm, construction area: 19 square meters, number of people: 2-4
 Size: 11500*2250*2450mm, construction area: 26.5 square meters, the number of people: 4-6



GS-PB01

Glass steel apple cabin. Available in three different sizes.
 Can be selected according to their own needs.

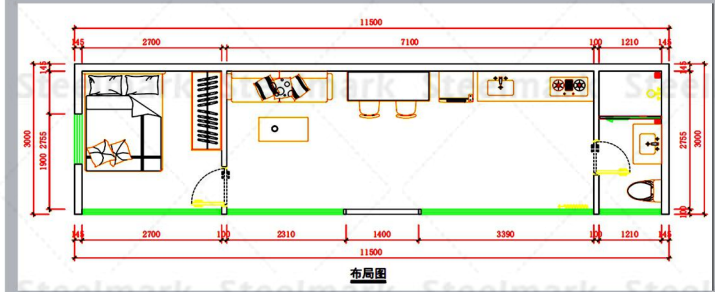
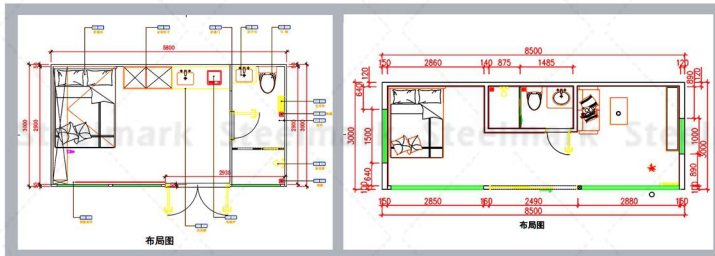
”



“



GS-PB02



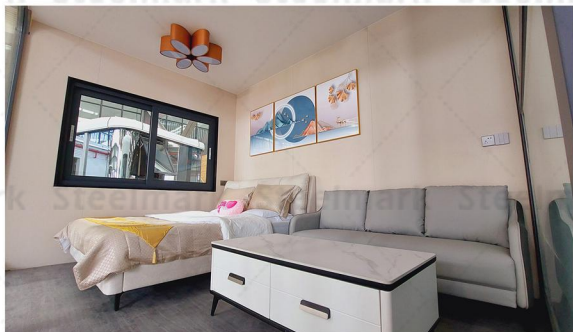
OPTIONAL SIZE

Size: 5800*3000*2450mm, construction area: 13 square meters, number of people: 1-2

Size: 8500*3000*2450mm, construction area: 19 square meters, number of people: 2-4 people

Size: 11500*3000*2450mm, construction area: 26.5 square meters, the number of people: 4-6

GS-PB02



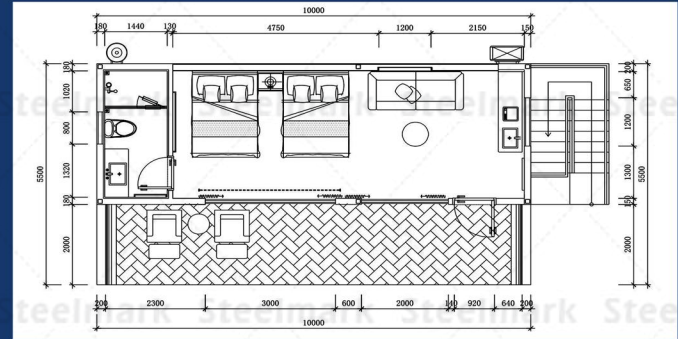
★ GS-PB03

PRODUCT SIZE

Size: 10000*3500*3200mm, construction area: 35 square meters,
the number of people: 4-8



GS-PB03





GS-PB04

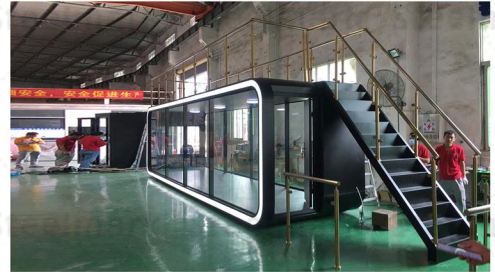
Product size

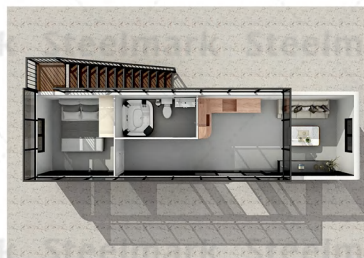
Size: 8500*2250*2450mm, construction area: 34.5 square meters, the number of people: 2-4

GS

PRODUCT INTRODUCTION

GS-PB04





GS-PB05

PRODUCT SIZE

Size: 11500*3000*3000mm, construction area: 34.5 square meters,
the number of people: 4-6



GS-PB05

GS-PB06

GS



PRODUCT INTRODUCTION

GS-PB06



GS-PB06

PRODUCT SIZE

Cabin size: 5800*4500*2450MM, fence size: 5800*2250*2450MM,
Building area: 26 square meters, number of guests: 4-6 people



PRODUCT INTRODUCTION



GS-PB07



GS-PB07

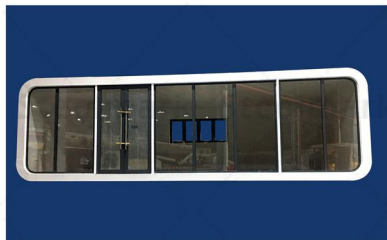
PRODUCT SIZE

Size: 9750*4500*3000mm, construction area: 43.9 square meters, number of guests: 4-6 people

Size: 12000*4500*3000mm, construction area: 54 square meters, number of guests: 6-8 people



PRODUCT INTRODUCTION



GS-PB08

GS-PB08

PRODUCT SIZE

Size: 12000*4000*3000mm,
Construction area: 48 square meters,
number of guests: 6-8



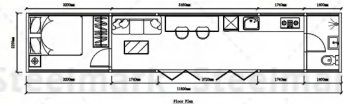
PRODUCT INTRODUCTION



GS-PB9

PRODUCT SIZE

Size: 11600*2250*2500mm, construction area: 26 square meters, the number of people: 4-6



GS-PB9

PRODUCT INTRODUCTION



GS-PB10

GS-PB10

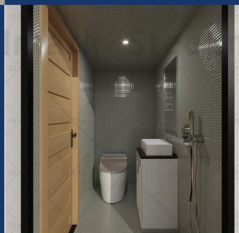
SIMPLICITY



ENVIRONMENTAL PROTECTION



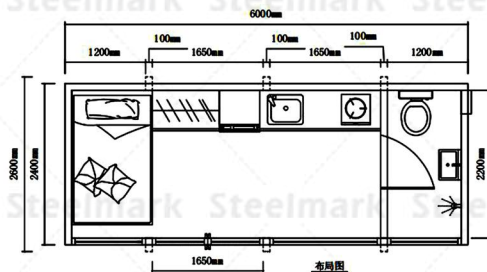
2023



PURE



LIFE



PRODUCT SIZE

Size: 6000*2450*2230mm,
Construction area: 14.7
square meters,
Occupancy: 1-2 people

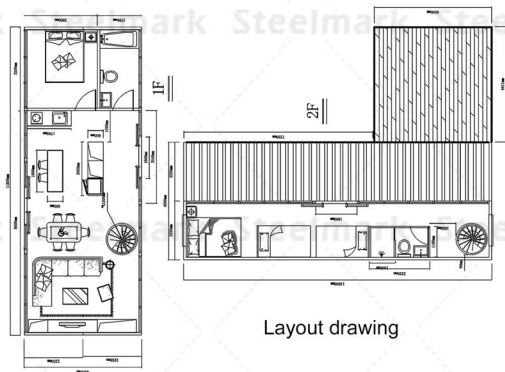


GS-DB01



PRODUCT SIZE

Size: 11500*2250*2450mm, building area: 25.9㎡,
Occupancy: 4-6 people



GS-DB01



GS-DB02



GS-DB02

PRODUCT SIZE

One layer: size: 6000*2500*2450mm, building area: 15 square meters,
the number of occupants: 2-4 people

Second floor: Size: 6000*2500*2450mm, building area: 15 square meters,
the number of people: 2-4 people



PRODUCT SIZE

One layer: Size: 11600*2250*2450mm,
The four hulls are spliced into two layers,
Construction area: 134.5 square meters,
number of guests: 8-16



GS-DB04



GS-DB04

PRODUCT SIZE

Size: 5800*2250*2450mm, two decks and two cabins, building area: 13 m²,

Occupancy: 4-8 people





GS-MB01

GS-MB01

PRODUCT SIZE

Size: 2250*2250*2250mm, construction area: 5 square meters, the number of people: 1-2



PRODUCT INTRODUCTION





PROJECT CASE

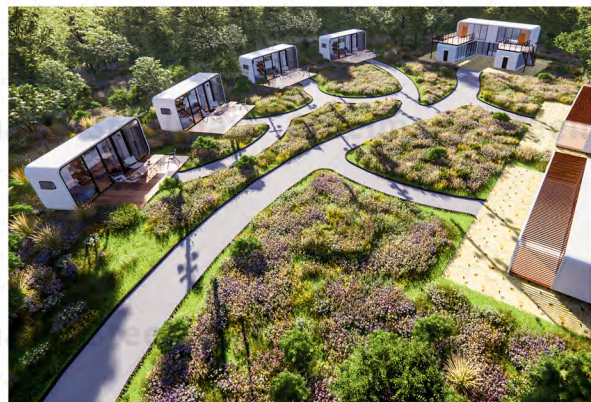


CONGHUA PROJECT





ZHAOQING PROJECT







PROJECT PRODUCT PRODUCTION Steelmark Steelmark Steelmark Steelmark Steelmark



Steelmark Steelmark Steelmark Steelmark Steelmark Steelmark Steelmark Steelmark Steelmark



PROJECT PRODUCT PRODUCTION

Steelmark Steelmark Steelmark Steelmark Steelmark



Steelmark Steelmark Steelmark Steelmark Steelmark Steelmark Steelmark Steelmark Steelmark



INTERNAL MODE OF TRANSPORT

After the external packaging of the product, the use of large plate, shipping car transport. Products from the factory to the site of the camp during the journey, will adopt strict safety protection measures to ensure safety and stability in transportation.

FOREIGN MODE OF TRANSPORT

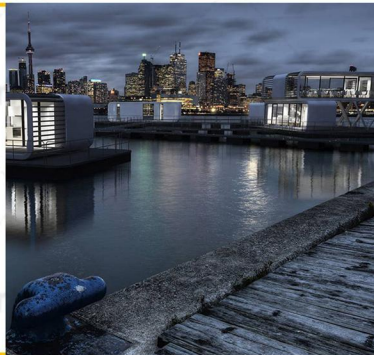

After the external packaging of the product is finished, it is transported in the container. Products from the factory to the site of the camp during the journey, will adopt strict safety protection measures to ensure safety and stability in transportation.



PRODUCT APPLICATION SCENARIOS




Wild luxury camping accommodation
Outdoor equipment exhibition
Theme concert
Design experience week

Brand press conference
Market catering
Aesthetics of life and lifestyle



Mobile shop
Mobile house
Mobile/sharing/ecology




Travel to study
Education and medical care
Health care and old-age care
League building and expansion





PLANT AND PRODUCTION



National color production base



National color production base

The total area of Guosse factory is about 30,000 square meters, more than 200 production personnel, the monthly delivery can reach 100 units. The core production team are all founders. Adhering to the production and management philosophy of providing customers with the best, highest quality, most ideal and most up-to-date products, each production and delivery process of products is strictly controlled, so as to achieve the best product quality and landing effect.



HONORS AND CERTIFICATES

ark Steelmark Steelmark Steelmark Steelmark Steelmark Steelmark



APPLE CABIN ALL MODEL CATALOG

